



# HSC 70 Polyclonal Antibody

<b>Catalog No</b>	YP-Ab-16291
<b>Isotype</b>	IgG
<b>Reactivity</b>	Human;Mouse;Rat
<b>Applications</b>	WB;ELISA
<b>Gene Name</b>	HSPA8
<b>Protein Name</b>	Heat shock cognate 71 kDa protein
<b>Immunogen</b>	The antiserum was produced against synthesized peptide derived from human HSC 70. AA range:202-251
<b>Specificity</b>	HSC 70 Polyclonal Antibody detects endogenous levels of HSC 70 protein.
<b>Formulation</b>	Liquid in PBS containing 50% glycerol, 0.5% BSA and 0.02% sodium azide.
<b>Source</b>	Polyclonal, Rabbit,IgG
<b>Purification</b>	The antibody was affinity-purified from rabbit antiserum by affinity-chromatography using epitope-specific immunogen.
<b>Dilution</b>	Western Blot: 1/500 - 1/2000. ELISA: 1/10000. Not yet tested in other applications.
<b>Concentration</b>	1 mg/ml
<b>Purity</b>	≥90%
<b>Storage Stability</b>	-20°C/1 year
<b>Synonyms</b>	HSPA8; HSC70; HSP73; HSPA10; Heat shock cognate 71 kDa protein; Heat shock 70 kDa protein 8
<b>Observed Band</b>	70kD
<b>Cell Pathway</b>	Cytoplasm. Melanosome. Nucleus, nucleolus. Cell membrane. Localized in cytoplasmic mRNP granules containing untranslated mRNAs. Translocates rapidly from the cytoplasm to the nuclei, and especially to the nucleoli, upon heat shock.
<b>Tissue Specificity</b>	Ubiquitous.
<b>Function</b>	function:Chaperone. Isoform 2 may function as an endogenous inhibitory regulator of HSC70 by competing the co-chaperones.,induction:Constitutively synthesized.,PTM:Phosphorylated upon DNA damage, probably by ATM or ATR.,similarity:Belongs to the heat shock protein 70 family.,subcellular location:Translocates rapidly from the cytoplasm to the nuclei, and especially to the nucleoli, upon heat shock. Identified by mass spectrometry in melanosome fractions from stage I to stage IV.,subunit:Interacts with HSPH1/HSP105. Interacts with IRAK1BP1 (By similarity). Interacts with PACRG and TSC2. Interacts with SV40 VP1.,tissue specificity:Ubiquitous.,
<b>Background</b>	This gene encodes a member of the heat shock protein 70 family, which contains both heat-inducible and constitutively expressed members. This protein belongs



to the latter group, which are also referred to as heat-shock cognate proteins. It functions as a chaperone, and binds to nascent polypeptides to facilitate correct folding. It also functions as an ATPase in the disassembly of clathrin-coated vesicles during transport of membrane components through the cell. Alternatively spliced transcript variants encoding different isoforms have been found for this gene. [provided by RefSeq, Aug 2011],

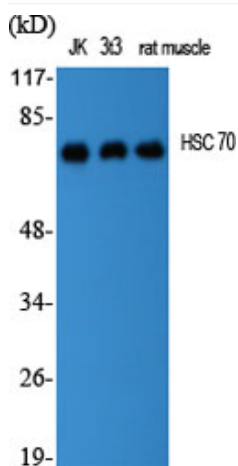
#### matters needing attention

Avoid repeated freezing and thawing!

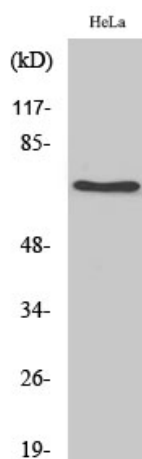
#### Usage suggestions

This product can be used in immunological reaction related experiments. For more information, please consult technical personnel.

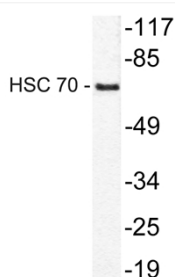
## Products Images



Western Blot analysis of various cells using HSC 70 Polyclonal Antibody diluted at 1:2000



Western Blot analysis of HepG2 cells using HSC 70 Polyclonal Antibody diluted at 1:2000



Western blot analysis of lysate from HeLa cells, using HSC 70 antibody.